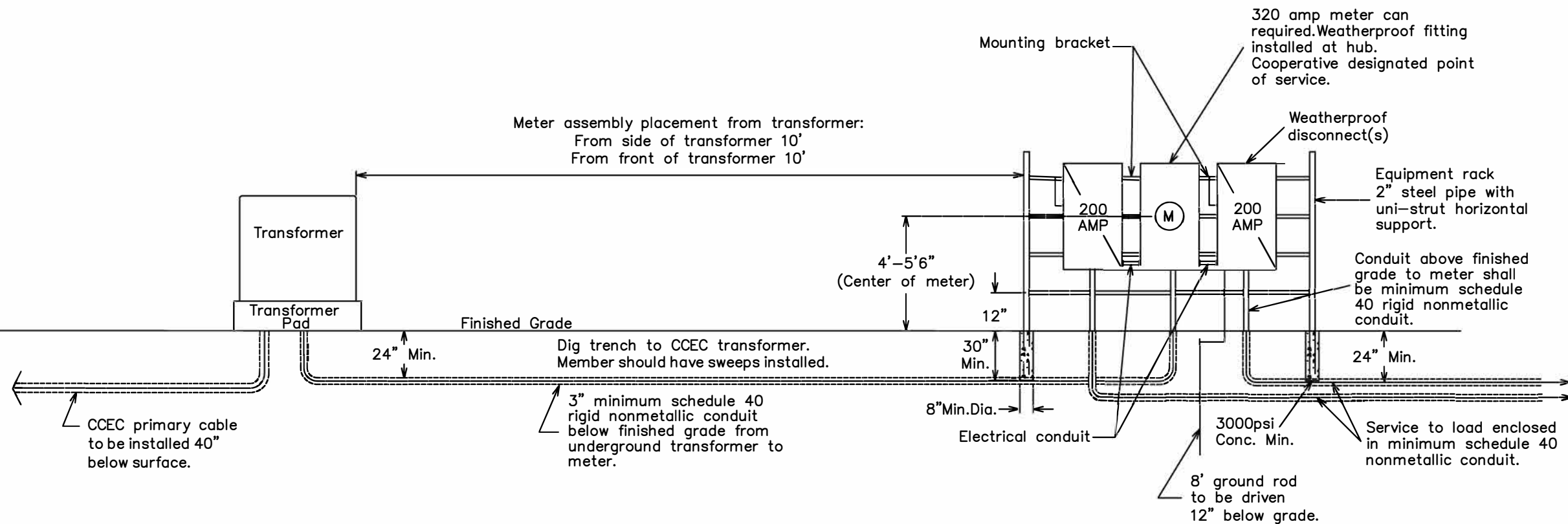


NOTES:

1. Main disconnect panel may not be used as an electrical race way.
2. Weatherproof fittings required.
3. Two (2) disconnects can be substituted with (1) fused disconnect.
4. Member will provide **minimum 350 copper** from meter assembly to transformer.
5. Neutral(s) may only be reduced one size on residential application. No reduction of the neutral(s) is allowed on commercial application.
6. Notify Coleman County Electric Cooperative office when meter assembly is complete.
7. Member will **provide conduit and wire** from transformer into meter assembly.
8. Member will **provide trench and cover** from rack to pad mount.
9. Member will **open primary cable trench** and cover to CCEC specification. Contact office for more information



FOR THE MEMBER'S SAFETY,
WIRING INSTALLATIONS SHALL
CONFORM TO THE REQUIREMENTS
OF THE NEC AND NESC.



320 AMP URD SERVICE ON A
RACK WITH CLASS 320 METER
SOCKET, 1 OR 2 DISCONNECTS

Drawn By: JH	Checked By: MG	Approved By: BM	Revised by: JH
Scale: N.T.S.	Date: 07-26-21	Drawing #:	Date: 4/19/2023