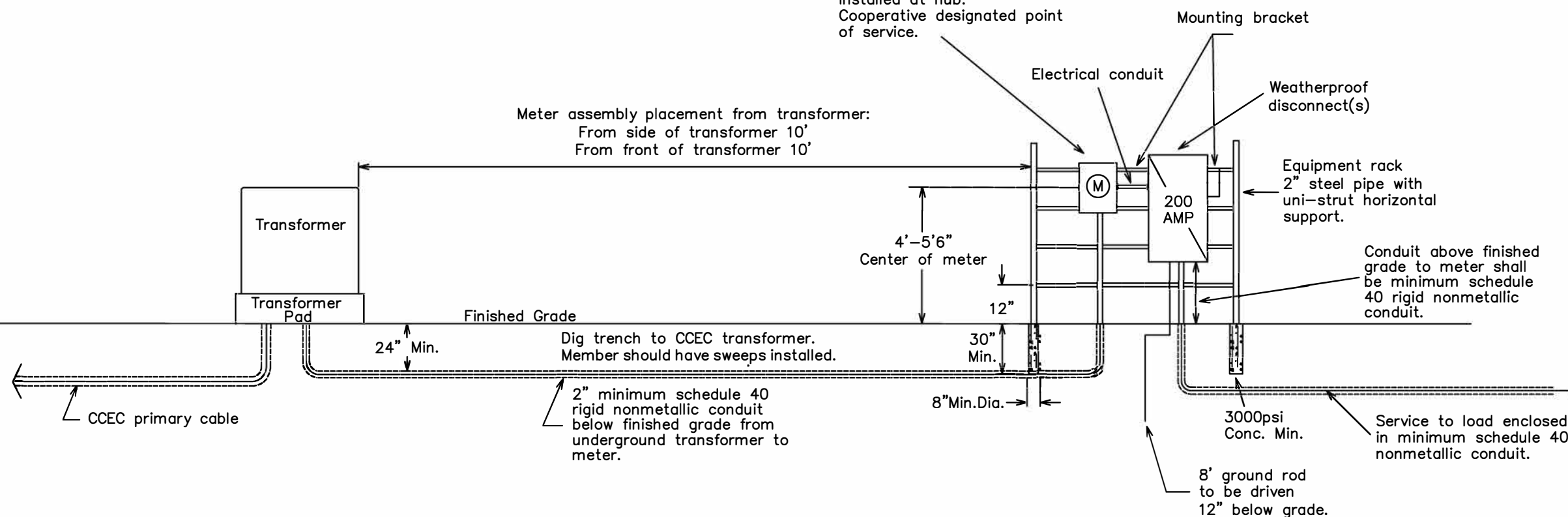


**NOTES:**

1. Weatherproof fittings required.
2. Minimum wire size: 200amp meter loop, 3/0 copper, 1/0 neutral
3. Neutral can only be reduced one size on residential applications.
4. Notify Coleman County Electric Cooperative office when meter assembly is complete.
5. Member will provide conduit and wire from transformer into meter assembly.
6. Member will provide trench and cover from rack to pad mount.
7. Member will open primary cable trench and cover to CCEC specification. Contact office for more information

200 amp meter can required. Weatherproof fitting installed at hub. Cooperative designated point of service.



FOR THE MEMBER'S SAFETY,  
WIRING INSTALLATIONS SHALL  
CONFORM TO THE REQUIREMENTS  
OF THE NEC AND NESC.



**200 AMP URD SERVICE ON  
A RACK WITH CLASS 200  
METER SOCKET**

Drawn By: <b>JH</b>	Checked By: <b>MG</b>	Approved By: <b>BM</b>	Revised by: <b>JH</b>
Scale: <b>N.T.S.</b>	Date: <b>08-03-21</b>	Drawing #:	Date: <b>4/19/2023</b>